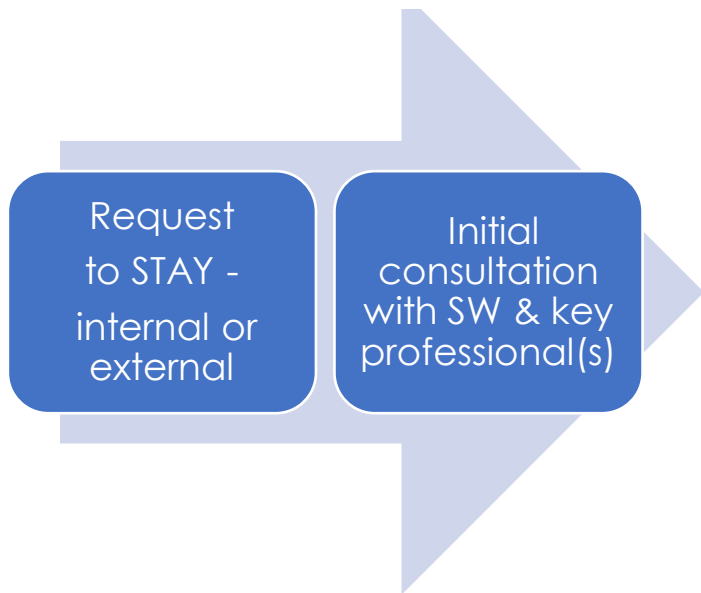


STAY (Strengthening the Team Around You)

Timely, flexible and intensive support

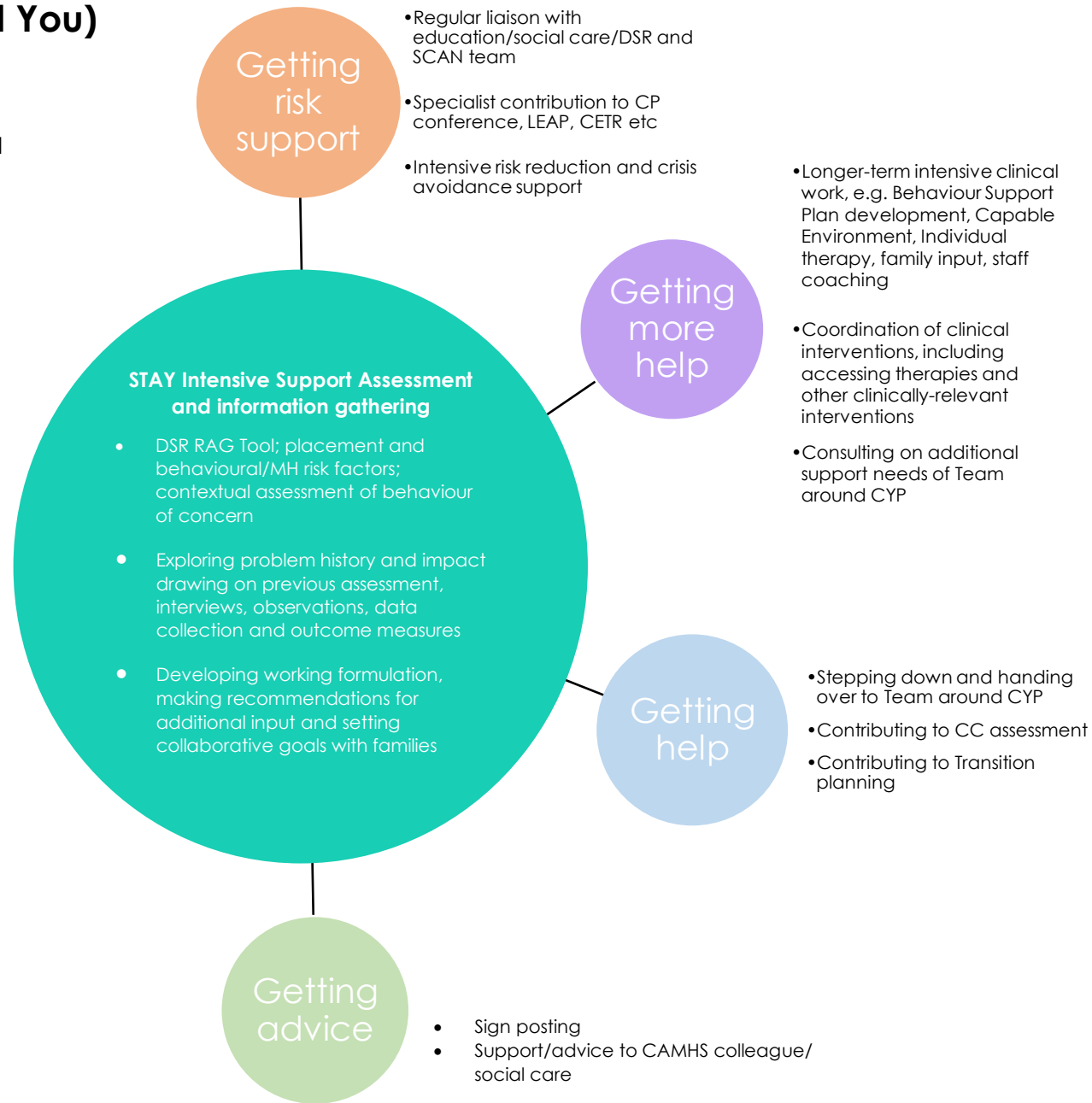
For family/carers who are experiencing persistent and impactful challenges coping with the behaviour of a young person with a learning disability.

This support occurs in partnership with CAMHS SCAN and others involved in the young person's care and support.



Referral criteria

- YP has received diagnosis of LD and has an Enfield GP
- Persistent moderate to severe mh/behaviour of concern
- Established risks for school/home placement breakdown
- Previous input to CYP / Family has not been fully effective
- Multi-setting and specialist clinical approach needed to develop a sustainable and capable support environment



to